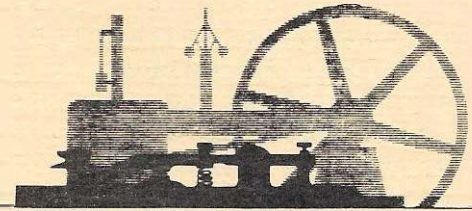


# THE NEW ENGLAND MUSEUM OF WIRELESS AND STEAM, INC.

Tillinghast Road, East Greenwich, Rhode Island 02818  
Robert W. Merriam, Director/Telephone 401 884-1710



## 1980 REPORT

In terms of accomplishment 1980 must figure as one of the best years in the museum's history.

First, the steam building has been doubled in size. This considerable construction job is now complete. It is handsome with its Palladian window at the north end and what is more, it has all been done very much ahead of schedule and very much within the first cost estimate.

In the midst of the present currency instability this is a remarkable achievement. Most of the credit goes to Director Richard B. Hanson. Dick engineered the building, studied and controlled the costs with his usual, most unusual, care. Jeff Berry and Steve Hanson were the principle assistants to Dick in the construction.

The directors are delighted with the quick progression of this work.

Next, in terms of ponderousness, has to be the planting of the huge Corliss safe donated by the Hospital Trust National Bank in its permanent resting place. Once again Dick Hanson solved this problem. The National Guard lifted the safe with their 25 ton crane - just barely. Dick Hanson built a concrete foundation, reinforced with railroad rail, which carries the huge weight with capacity to spare.

In 1980 the donations of books and equipment to the museum has been outstanding.

Vance Phillips, W6GH, of Santa Barbara, California, has spent a lifetime putting together a truly superb collection of wireless material. His library is probably the best privately owned wireless library in the world, a library which Vance has read and reread and digested. His scientific training has made him no ordinary collector. The museum is highly honored that Vance should select this institution as the permanent home of his entire library and half of his equipment.

In August Nancy and I travelled to Santa Barbara to pack and ship this remarkable collection. Thorn and Lygia Mayes gave freely of their wisdom, time, labor, and hospitality in this project. This help of the Mayes' is greatly appreciated by the museum, and it is help that has extended backwards almost twenty years.

The Phillips gift is so large that it has called for a complete reorganization of the wireless displays. A future report will tell



more of this story.

In addition to Vance's gift the museum was named recipient of the Earl Warrington collection of engines in Sturbridge, Mass. Earl was an authority on steam historical matters. He worked as a consultant to the Smithsonian and he had put together a magnificent machine shop, vintage late 19th century - complete with line shafting, vertical boiler, engines, pumps, etc. Earl cared for his equipment beautifully, so that it is all in superb shape. The museum is very grateful to Earl and to his brother, Ralph, for this splendid contribution.

This fall, at ceremonies in Windsor, Connecticut, President William Wathen of the Terry Turbine Corporation presented the museum with Serial #14 Terry Turbine. This machine has run for something like 70 years and the only replacement part it has ever needed has been one bearing. The Terry Turbine Corp. mounted the unit on a mahogany base and provided it with an engraved sign. We thank Terry Spencer for arranging this most important gift.

These are three large gifts. There have been many more gifts. Outstanding among them is a beautiful model of a vertical engine built by August Swanson of Warwick, Rhode Island. It is an exact reproduction of a compound engine generator set which Gus knew in Sweden when he was a boy.

1980 museum activities have kept pace with the gifts. The National Association of Power Engineers, Chapter #1, meets here under President Don Langlais. The Fidelity Amateur Radio Club has made its annual pilgrimage. The Antique Radio Club of America conducted part of its national convention here. University of R.I. classes, Rhode Island College, Warwick Schools, Cub Scouts, etc. continue to make regular visitations.

The big event of the year continues to be Yankee Steam-Up which took place, as usual, the last Saturday of July. At 1 PM on Steam-Up day we dedicated the Arthur Moulton engine, now erected in the new addition to the steam building. Mrs Arthur Moulton and David Moulton took part in the ceremony along with many of Arthur's friends.

Director Dan Fay and Louisa made Steam-Up go with their usual energy. Dan was the first to arrive with his camper. He took charge of organizing the model table and attending to dozens of details in the engineering department. The next camper to arrive was that of Dick and Barbara Day from Maryland. They immediately pitched in to help with the preparations.

Fred Pendlebury, Bob Savory and family, Mr. and Mrs Dennis Melander, Erol Noel, Fred Cooper, and all the N.A.P.E. gang did a tremendous job, on a very hot day, with delicious refreshments. Eastern Refractories Co. and Hennigan Engineering Co. donated the hamburgs and hot dogs. The refreshment stand was a popular spot. The museum depends on and is indebted to the N.A.P.E. people for this generous and important help.

Athur Moore, Jeff Berry, Carol Anderson, Walt and Marion Kleinfelder, Merrill and Louise Budlong, Walt Olney, Susan Merriam, Tom and Cindy Day, and many others pitched in to make the day a

success. Marion Fry at the spinning wheel in Colonial costume was one of the nicest attractions.

On May 2nd Cindy Mellor was married to John Neale in the meeting hall amidst heather, scotch broom, and Paul Howland's bagpipe music.

There have been several memorial services in the meeting hall. One was for Marian L. Merriam, Bob's mother. A fund has been established in her memory to provide for the upkeep of the building. The directors thank those who have already contributed to this fund and invite others to add to it to preserve this architectural gem.

Our annual Carol Sing in conjunction with the East Greenwich Preservation Society was a great success. The outside was dusted with new snow by Mother Nature and the inside beautifully decorated by Nancy Merriam. This combined with the pump organ music, the instrumentalists, the carollers, and mulled cider and goodies, made it a memorable event.

The engineering museum has many plans for the future.

First, a new brochure is in the making to bring its information up to date. Next, new building plans are underway; a separate boiler house is being studied, as well as more library space. Then there is a whole range of jobs in progression. Rearranging the displays in both the wireless and steam buildings is important. A new display telling the story of electronics at sea is in the works. A new vacuum tube display is planned. A special display case has already been devoted to Vance Phillips' detector collection. A communications receiver display is almost complete.

The George H. Corliss engine restoration is moving on well, but it needs to be completed. An engineer's station with roll top desk is planned for a spot in the new steam building and this will be combined with a space to display model engines.

All this is both great fun and of great value, but it does take money to keep the volunteers in materials and it is also essential to increase the endowment in plans for the future.

The donation of stock is a good way to help this institution and benefit yourself with attractive tax deductions as well. Please remember that this museum gets no government support other than our I.R.S. tax exempt status and the National Guard's Training Exercises (here we get the use of their machines and they get the benefit of our experience and intricate, unusual problems to solve.)

Your contribution will be spent prudently for important immediate needs or invested prudently to insure our future. So whatever way, a little or alot, we hope you can help.

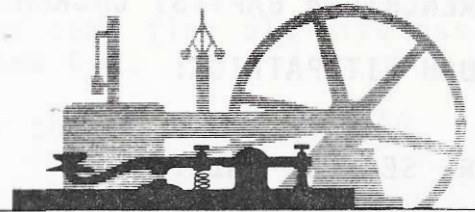
We wish you all good health and prosperity in 1981 and we hope to see you on Steam-Up Day or at one of the radio meets soon.

Happy New Year from the Directors.



# THE NEW ENGLAND MUSEUM OF WIRELESS AND STEAM, INC.

Tillinghast Road, East Greenwich, Rhode Island 02818  
Robert W. Merriam, Director/Telephone 401 884-1710



## SUPPLEMENTARY THANKS

Here are some of the people who have helped the engineering museum with valuable gifts of things, labor, and even advice. There are surely more who have slipped my mind at the moment.

GIL E. JOHNSON, W1DZ:

Many interesting and rare relics including an ancient copper jacketed gas engine, an Armington-Sims thermometer, and a beautifully restored Murdock rotary gap. Also an unusual record of his own wireless doings in 1913.

GERRY TYNE:

Many rare communications documents, books and tapes, as well as his valued advice on the museum's board, and his service as a judge during the AWA meet.

JEREMY SHEPARD:

Many hours of hard work steam fitting and lagging steam lines. Also much hard work as engineer in charge of the boiler on several occasions.

SEA BEES 21st NCR  
Davisville:

Men and equipment to grade the land behind the meeting house in the Fall of 73.

JIM GRABBERT:

The use of himself and his truck to help move rocks.

VICTOR RICHARDSON:

An old steam engine pro who has helped on many occasions- painting, stoking, photographing, coaxing bauky engines into operation.

ELEANOR SCHOCK:

All kinds of help and advice in the office and elsewhere.

STEVE & JON SCHOCK:

Labor in rock moving, grading, and parking.

RICHARD H. KAUFMANN:

A rare VT-1 tube with notable autographs from the 1964 AWA meet & the opening of the museum.

SANDRA WEINDEL:

A picture of the railroad locomotive which supplied its bell to the church.

FRENCHTOWN BAPTIST CHURCH: Three lovely chairs and a pulpit.

HUGH FITZPATRICK: A duplex steam boiler feed pump in excellent condition.

MRS SEARLES BALL: Her late husband's Buffalo Springfield steam roller.

SHEPARD G. SAUNDERS: Learner's telegraph set with battery electrodes and instruction book, made in 1875.

KENNETH PETTIGREW: The promise of a boiler.

BOB ORTELT: Precise machine work and steam fitting.

ANDY ANDERSON: Unique triple high-performance marine engine and boiler, plus considerable financial help, and a rare deForest receiver.

CHET FOSTER: Much willing work before and during the AWA meet.

LOUIS TETREAULT: Many hours at the registration desk during the AWA meet.

CORKY CROSBY & DAVE KERNAN: Cleaning displays in the wireless building.

ARTHUR MOORE: Great help providing steam and equipment during the steam meet.

RICHMOND FROST: Ekko radio stamp book.

RALPH FULLER: Steam engine plate.

MICHAEL CARTY: Much help and many old radio tubes from the New England Technical Institute.

FRANK DUFFY: Back breaking labor grading around the meeting hall, working for his Eagle Scout rank which he has since acheived.

THORN MAYES: Wise counsel, documents, and the help that only an historian can give.

LARRY WHITLOCK: A most effective discussion leader during the AWA meet, and a gift of a long sought after radio book.

N.D. FAY: His contribution in running and displaying engines during the steam meet and also the donation of steam books to the library.

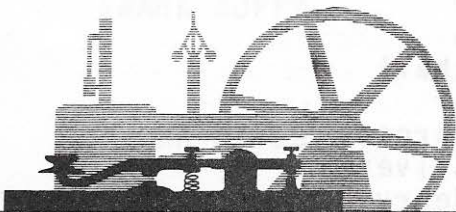
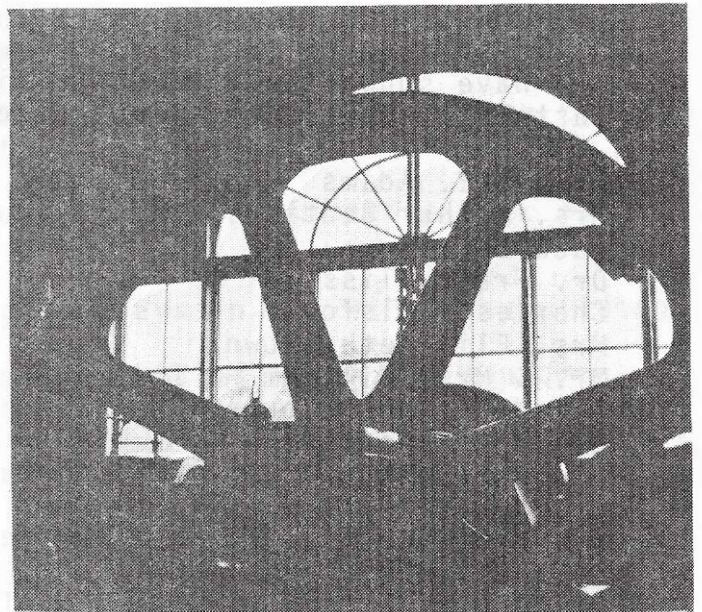
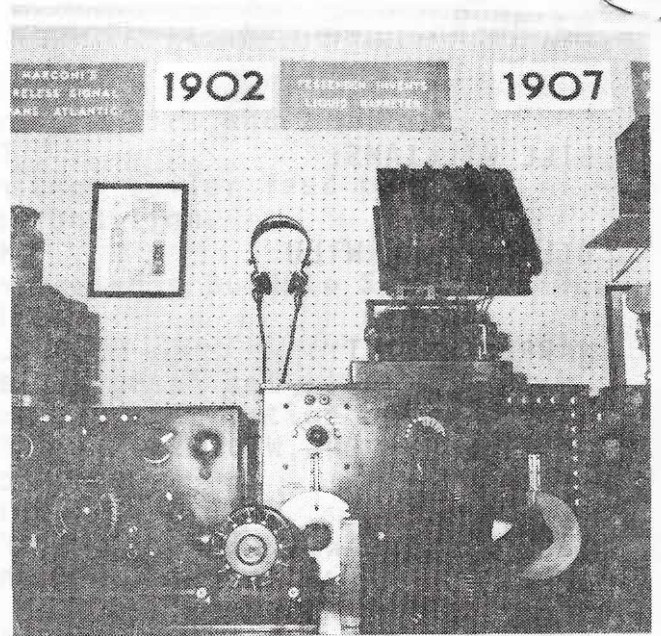
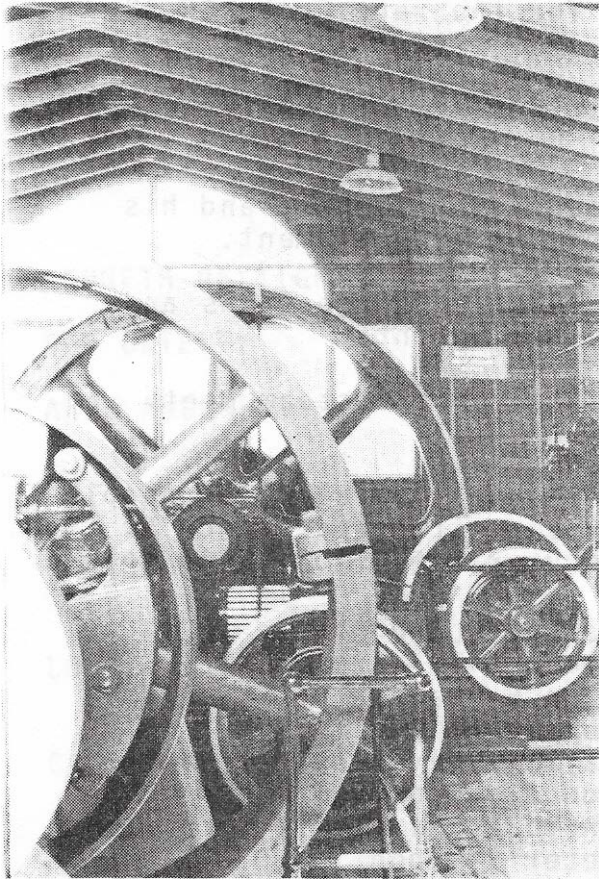
TED JUDD: Help - financial, ambassadorial and material. Interesting books donated the the library.

BILL WILLIAMS:	The donation of some fine old wireless relics from Cape Cod.
BILL ALLEN, WILU	More coils for the rare Grebe CR-18 receiver.
WARREN HAGIST:	Leather belt for Armington-Sims steam engine.
MERRILL BUDLONG, WIQLD:	For his encouraging support and his continuing gifts of equipment.
SELWYN N. BLAKE, K1CPW:	For his stimulating suggestions and his gifts of equipment.
ROGER BROWN, D.M.D.:	A load of coal for the steam meet.

In addition to the above helpers there are the following people who have supported the museum financially since the appearance of the last list of donors. The trustees are very grateful for their help.

Harold E. Adams	Paul R. Ladd
Mrs. Arthur Bentley, Jr.	Gilbert D. Larder
Jack Berman	John B. Lawson
Dr. Frank Bliss	Robert E. Lee
Charles Brelsford	Raymond Levesque
Mrs. Elizabeth Brown	Don J. Lucas
Mr. & Mrs. William H. Butler	Thorn L. Mayes
Standish Tabor Bourne, Jr.	Peter E. Moon
John H. Caperton	Mr. & Mrs. Homer W. Moore
Vincent Catauro	Paul C. Nicholson, Jr.
Mr. & Mrs. Paul B. Chesebro	David H. Opperman
Mrs Paul C. Cook	Albert E. Pickard
George E. Cool	Albert R. Pierce, Jr.
Mr. & Mrs James Crawford	John B. Prata, Jr.
A.T. Cross Pen Co.	George Raiselis
East Greenwich Cub Scout, Pack#4	Charles P. Rogers
Mr. & Mrs Jerome Feinstein	Francis Roy
William E. Frankland	Ralph Sasso
Dr. Madeline E. Gurken	James C. Schell
William B. Gould	Carl Schleif
Daniel J. Giro	Peter B. Schroeder
Warren L. Green	Howard D. Silverman
Robert Allen Greene	Mr. & Mrs Henry D. Sharpe, Jr.
William Grosvenor, Jr.	Henry C. Slack
William T. Hall, Jr.	Arthur J. Smith
Ellsworth S. Harding	Howard L. Streeter, Jr.
Silvio Hernandez	Kenneth W. Sullivan
Mrs George Henderson & Ian	Lawrence O. Sutton
Clarence deWolf Herreshoff	Charles L. Tayler
Edward P. Jastram	A.B. Van Liew
Edward P. Kingsbury	Franklin F. Wingard
John M. Kingsbury	York Communications
Willis G. Kingsbury	Anonymous \$10.00
Robert H. Knell	Anonymous \$500.00





**THE NEW ENGLAND MUSEUM  
OF WIRELESS AND STEAM, INC.**

Tillinghast Road, East Greenwich, Rhode Island 02818