

# PROOF

## The Original Old Fashioned YANKEE STEAM-UP NEW ENGLAND'S OLDEST ENGINE SHOW

Saturday, October 3rd, 2015 • 9:00 am - 4:00 pm

- Huge historic Rhode Island steam engines restored to running condition and operating on live steam!
- Many of these engines represent Rhode Island's legacy as an industrial power in manufacturing.
- Model and small engines running on steam, gasoline and compressed air.
- Antique autos, launches, even a popcorn machine.
- The Massie 'PJ' Station and the museum's extensive wireless collection.

### EXHIBITORS FREE ADMISSION

Your ingenious relics and your exquisite models make the show. Steam, gas, diesel, hot air or electric. Engines, intriguing mechanical devices, antique autos & motorcycles, boats, steam bicycles. Help make this a dynamic display.



*A 1863 model trunnion engine that is 4½" high.*

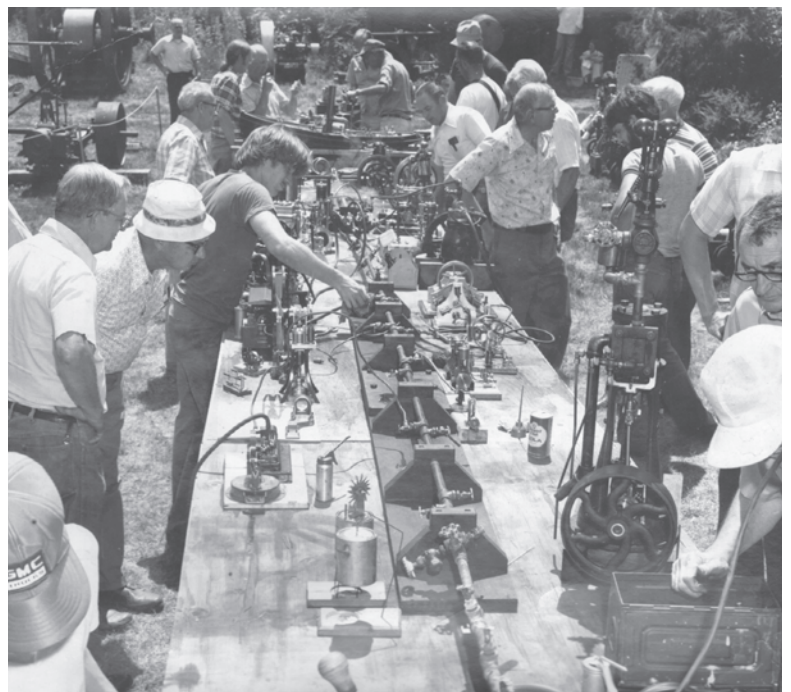


*The 100 horse power 'Lookout' boiler will be fired up to run the large engines and the model engines on the steam table.*

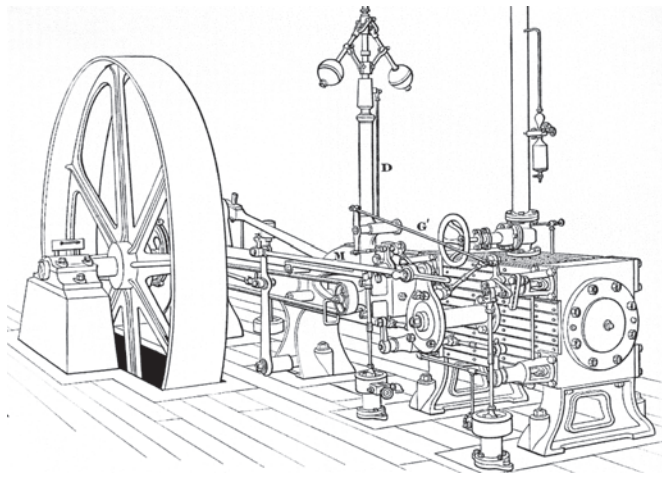
**ADMISSION: \$15 • \$7 STUDENTS  
PLENTY OF FREE PARKING  
REFRESHMENTS AVAILABLE**



*A panoramic view inside the steam engine building with many of the engines that will be running.*



*Air and steam tables are always a busy attraction.*



The superior efficiency of the Corliss engine was recognized throughout the world. Come and see three operating engines with Corliss valves, including the only surviving engine made by the Corliss Steam Engine Co. that is still in operation under steam.



## THE NEW ENGLAND WIRELESS AND STEAM MUSEUM

A Non-Profit • Public • Educational • Engineering Museum  
1300 Frenchtown Road • East Greenwich, RI 02818

NON-PROFIT  
U.S. Postage Paid  
North Kingstown, RI  
02852  
Permit No. 8

**Support** – This museum shows the history of electrical and mechanical engineering and the remarkable changes they have brought about. Please consider support of the museum's endowment by a contribution in the enclosed envelope. Your tax-exempt gifts keep the museum going.

**Exhibitors:** Please sign up by Sept. 20th • Email: [flj@newsm.org](mailto:flj@newsm.org) • Email: (410)-885-0545 • Visit: [www.newsm.org](http://www.newsm.org)

### VOLUNTEERS

Susan Merriam  
Nancy A. Merriam  
Terry Jones  
Mary Clark  
Colin Leath  
Jeff Berry  
Rolf Richter  
Tom Patterson  
Joe Smith  
Mike Thompson  
*and many others...*

Kendall L. Adams  
David Crowell, KATDP  
Warren Hagist  
Frederick Jaggi  
Colin Leath  
Craig Moody  
Robert W. Merriam, WINTF  
David Caldwell  
Timothy Straw  
Lou Vertefeuille

### DIRECTORS

Frederick L. Jaggi, *President*  
Richard B. Hanson, *Vice President*  
Jeffrey R. Berry, *Secretary*  
Terrance K. Jones, *Treasurer*  
Robert W. Merriam, *President Emeritus*  
Susan Merriam  
Nancy A. Merriam  
Colin Leath, K1IXU  
Gerald Weinstein, *Historian*  
Kendall L. Adams